



Designed for Precision 

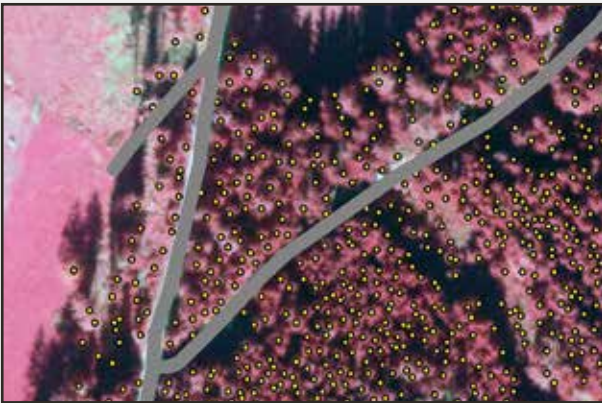
Airborne

**GEOINFORMATION SOLUTIONS**

## FOREST MAPPING

Combining imaging techniques and sophisticated technology main forest parameters can be calculated with highest accuracy for large forested areas. Our services provide:

- Tree volume and mass calculation
- Species delineation
- Storm loss and deforestation mapping



Single tree extraction

## PRECISION FARMING

Supporting modern agriculture with comprehensive plant growth information contributes to the sustainment and development of better farming. Our services provide:

- Basic land cover assessment of agricultural entities
- Biomass and crop estimation
- Vegetation analysis and mapping

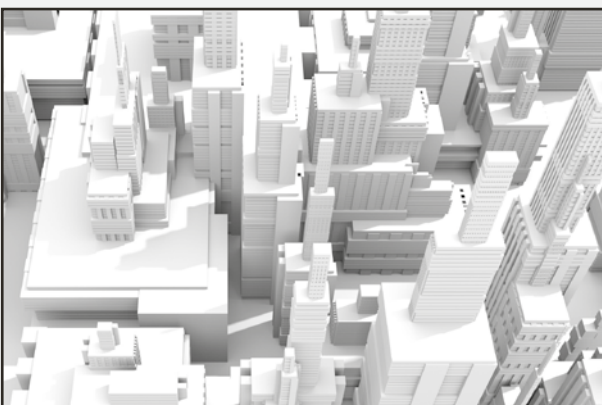


Biomass estimation

## CITY MAPPING

Modern urban planning is dependent on remote sensing data with highest resolution and accuracy. We combine both to ensure the customers' needs for modern planning infrastructure. Our services provide:

- Virtual 3D city models
- Foto-realistic visualization



Block models

## CHANGE DETECTION

Geodata is a common tool to quantify changes on the topography or environment. We have developed sophisticated methods to compare and analyze multi temporal dataset due to substantial changes of selected thematic classes. Thus actual data set can be compared to historical data sets to extract changes within the substance. Our services provide:

- Quantification of rural and urban spatial processes
- Precise localization of thematic hot spots

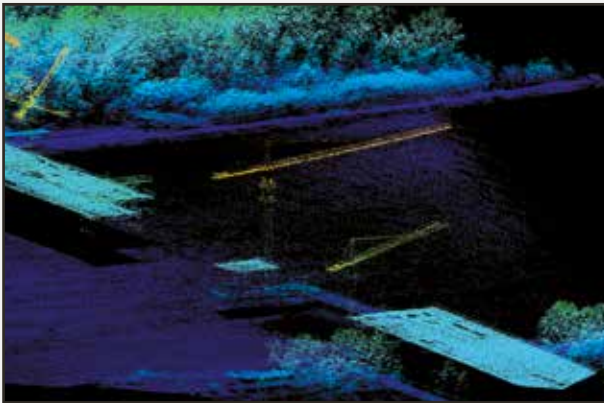


Development changes

## ENGINEERING AND CONSTRUCTION

In the engineering and construction sector, fast data acquisition is of high importance. Our aerial platforms operate over all terrain very efficiently and economically. Our services provide:

- Planning studies for new constructions
- Quantity calculations
- Detection of terrain and quantity changes guaranteed by repeated flights
- 3D-simulation



Bridge construction

## AIRBORNE LASER BATHYMETRIE

Airborne Laserscanning in shallow water bridges the gap between onshore and offshore areas. Since the beginning Airborne Technologies uses the latest technologies to provide data below the water level of inland waterways and offshore areas. Our services provide:

- High resolution and accuracy models of coastal areas
- Detection of structures below water level

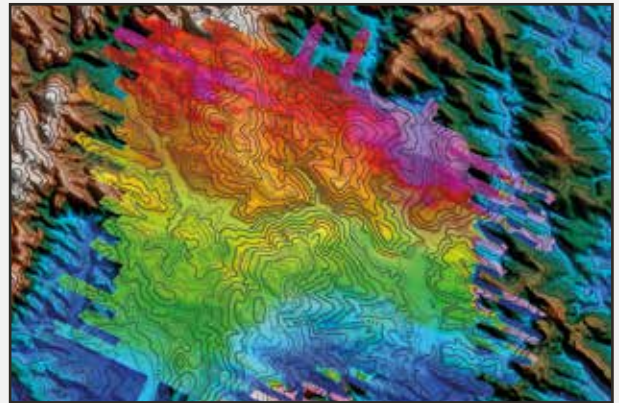


Filtered seabed model

## REMOTE SENSING FOR EXPLORATION SCIENCE

Employing airborne geophysical exploration techniques means revealing the treasures in the subsurface. Our aerial measurement platforms are best suited to deliver high quality data on a best price level. Our technologies are:

- Magnetometry
- Gamma ray spectroscopy
- Versatile low frequency electro magnetic
- Gravity



Aero magnetic total field map

## DISASTER RISK MONITORING

Disaster Risk Monitoring means flexibility and reliability when it comes to an event. Our own fleet of aircraft provides the needed flexibility to react quickly. Our data processing facilities are able to deliver lifesaving information at the right time and to the right people. Our services provide:

- On-demand data acquisition
- Highest reliability
- Near-real time data processing



Flooding



## ABOUT THE COMPANY

We are an Austrian private limited company based at the Wiener Neustadt Airport. Our company consists of a team of experts in aviation, system engineering and geo-data acquisition.

Our scope of services includes the integration of any Airborne Remote Sensor into the customers' platform, the development of customized ISR Turnkey Solutions as well as the acquisition and processing of geo information for governments, police, military and many sectors of industry.

## CONTACT

**Airborne Technologies GmbH**  
Viktor-Lang-Straße 8  
2700 Wiener Neustadt | Austria

[office@airbornetechnologies.at](mailto:office@airbornetechnologies.at)  
[www.airbornetechnologies.at](http://www.airbornetechnologies.at)

P+43 2622 34718 200  
F+43 2622 34718 300

**EASA Design Organization**